



 smeg

FRIGORIFERO D'ARTE

Dolce & Gabbana





FRIGORIFERO D'ARTE

Dolce&Gabbana and **Smeg** have teamed up once again for the design of a special edition of the **FAB28 refrigerator**, transforming it into a **work of art**.

The two companies belong to two different creative sectors but are united by strong values and a tradition of **"Made in Italy" excellence**: sharing similar backgrounds rooted in the family and local territory.

They have a deep **respect for tradition** and their **creativity** allows them to skillfully combine eras, different specialties, and sensibilities.



The result of this partnership is the special Fab28 Smeg refrigerator with unique Dolce&Gabbana styling.

Each refrigerator features **images by Sicilian artists**: lemons, the trinacria symbol, cart wheels, medieval knights and battle scenes - all distinctive elements of the poetic marionette theater and the Sicilian Cart as well as important aspects of the aesthetic of Domenico Dolce and Stefano Gabbana.

The themes developed for each product are embellished with **classic floral motifs**.

These **100 exclusive refrigerators** - the result of innovation and a meticulous eye for detail.

smeg

DOLCE & GABBANA

Bevilacqua

Chivalric Scene with Paladins and Saracens



The Sicilian "carretto" and its traditional iconography are the main sources of inspiration for the realisation of this refrigerator. Depicted on the front, inside a rich frame, is the battle between the paladins and Saracens with a castle in the background. Cameos of soldiers and details of the battle, embellished with geometric designs and patterns, are the focus of the side decoration, the colours and iconography of which connect it to the tradition of cart painting.

FAB28R-DG
BV02YW



smeg

DOLCE & GABBANA

Bevilacqua

Chivalric Scenes with Rinaldo, Ruggiero and St. George



This refrigerator, historiated with chivalric scenes and decorative motifs typical of the Sicilian cart, features on the front the battle between Rinaldo (one of the twelve paladins loyal to Charlemagne) and the Magonzesi, traitors of the kingdom of France. On the sides we find the episode of Ruggiero challenging the pagans to a duel, along with a representation of St. George, patron saint of knights and carters, in the act of slaying the dragon. Geometric and checkerboard decorations adorn every surface in a blaze of colours that evoke the Sicilian tradition.

**FAB28R-DG
BV04PG**



smeg

DOLCE & GABBANA

Bevilacqua

Chivalric Scenes with St. George and
the Paladins of Charlemagne



The central figures of this refrigerator are St. George, shown in the act of defeating the dragon on the front, and the Paladins of France, framed by the sumptuously colourful fret patterns that characterise Sicilian carts. The heroic-chivalric themes shared by the "carretto" and the puppet theatre, are intended to express the eternal conflict between good and evil through an enchanting kaleidoscope of images and colours.

**FAB28R-DG
BV05YW**



smeg

DOLCE & GABBANA

Bevilacqua

Chivalric Scenes



The bold, brilliant colours of the flanks of the Sicilian cart ("masciddari"), the geometry of its wheel spokes and checkered patterns, all originating from the puppet theatre, characterise with the same intensity the chivalric scenes represented on this refrigerator. On the front and on one side, the paladins are in the process of defeating the enemy in a tumult of waving plumes and sparkling armour. Painted on the other side is the Trinacria, the emblem par excellence of Sicily.

**FAB28R-DG
BV06YW**



smeg

DOLCE & GABBANA

Patania

Gallizone, Zanclea delle Stelle and Guido Santo



On the front of the refrigerator is a scene from the "Council of Zanclea delle Stelle in Babylon", where the pagan sovereign Gallizone, wearing his royal robes, receives in audience his daughter Zanclea. On one side is painted a highly symbolic episode taken from the "Liberation of Guido Santo", in which the protagonist (son of Bradamante and Ruggiero and prince of Vienna), rises from a tomb/column wearing Orlando's armor and brandishing his sword, the "Durlindana". On the other side, an angel bathed in light indicates the right path to Guido Santo. On the top is an eagle symbolizing the helmet and shield of Guido Santo and Orlando.

FAB28R-DG
PT01GN

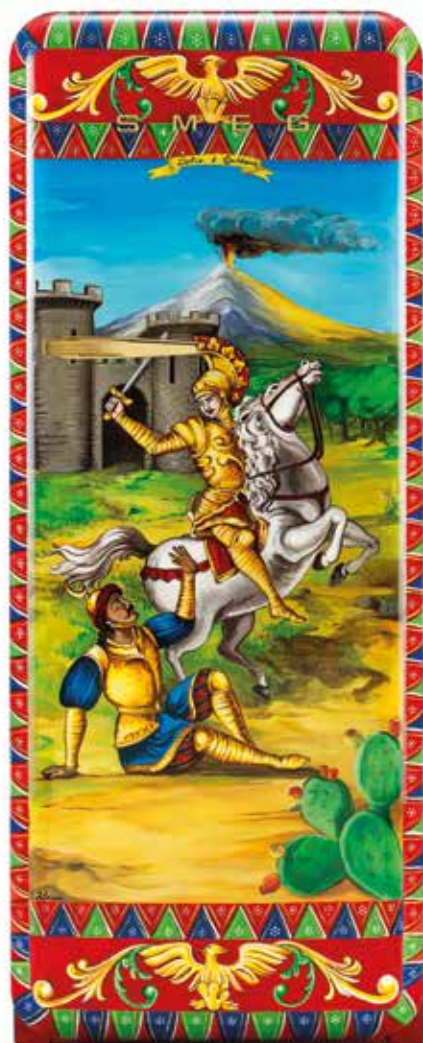


smeg

DOLCE & GABBANA

Patania

Scenes from the Puppet Theatre with Orlando and Troiano



The front of this refrigerator portrays a classic Sicilian puppet theatre, with its tents, wooden platform and backdrop decorated with landscapes of Sicily. On the stage are Orlando (hero par excellence, the prototype of all subsequent knights) and Troiano, the Saracen who challenges him to avenge his father's death, but who will be defeated and slain. On the sides are depicted various puppets of the type controlled by a "maniante", or marionettist, who is positioned on a raised deck, hidden from the spectators' view, transmitting movement to the puppets on stage with rods and wires. Painted on the top are the elements that make up the armour of a paladin: helmet, cuirass and shield.

FAB28R-DG
PT02RD



smeg

DOLCE & GABBANA

Patania

Chivalric Scenes with Milone, Agricane, Ruggiero and Rodomonte



The front of the refrigerator is dominated by a scene depicting the clash between Milone, paladin of France and father of Orlando, riding his horse, and Agricane, Tartar king and valiant warrior. On one side we find Ruggiero dall'Aquila Bianca, gallant fighter and king of Bulgaria, who kills the character represented on the opposite side, Rodomonte, king of Algiers and Sarza, dressed in a crocodile hide and a pointed helmet. Painted on the top of the refrigerator is a classic Sicilian cart wheel.

FAB28R-DG
PT03YW



smeg

DOLCE & GABBANA

Patania

The Creation of a Sicilian Puppet: Orlando



The images painted on this refrigerator recount the various steps in the construction of a Sicilian puppet. The character portrayed here is Orlando. Starting from the side, we see the creation of the armour, embossed and assembled entirely by hand. On the other side appears the second step, i.e. the joining of the armour to the wooden "skeleton" of the puppet, already completely dressed in hand-stitched cloth and fringe. On the front we see the completed Sicilian puppet, with head and cape. The three panels are graced by the same number of Baroque masks. On the top are two symbols that refer to the character of Orlando: his sword, called "Durlindana", and the horn that Orlando sounded at Roncesvalles to warn Charlemagne's army, known as the "Olifante".

FAB28R-DG
PT04RD



smeg

DOLCE & GABBANA

Patania

Chivalric Scenes with St. George, Rinaldo and the Old Man, and the Death of Martuffo



This refrigerator is characterized by the spirit of chivalric heroism shared by the puppet theatre and the Sicilian cart. The main character of the front side is St. George, patron saint of carters and knights, shown slaying the dragon. The battle between Rinaldo, paladin of Charlemagne, and the Old Man is depicted in brilliant colors on one of the side panels, framed by decorations typically found on Sicilian carts. The third panel portrays another episode from the puppet theater, the "Death of Martuffo", the Saracen killed by Guido Santo. The trinacria, emblem of Sicily, decorates the top.

**FAB28R-DG
PT05AZ**

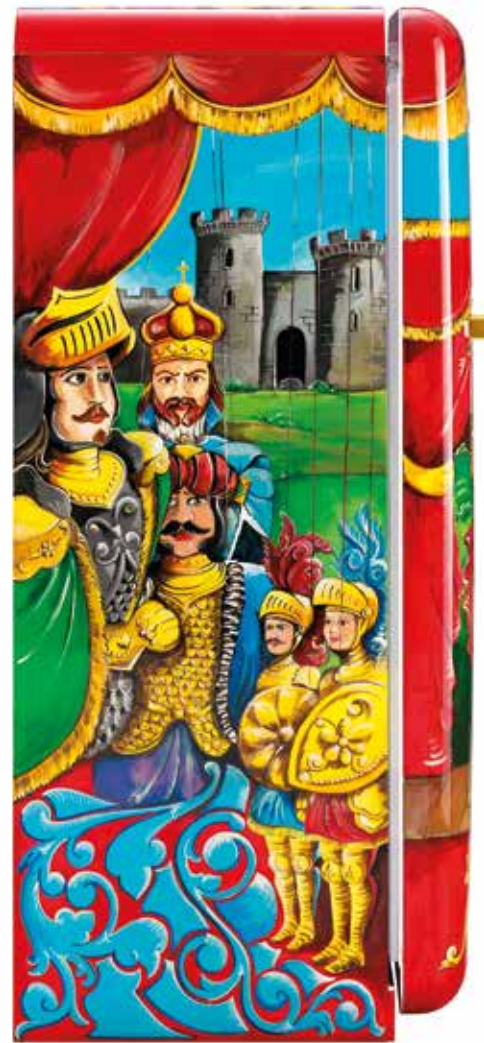


smeg

DOLCE & GABBANA

Patania

The Sicilian Cart



Illustrated on this refrigerator are the parts that make up a Sicilian "carretto". On the front panel we see the wheel and the "masciddaru", from the Sicilian word for "jaw", meaning the side of the cart, which is divided into two panes. On the upper register of one side we find the "chiave dell'asta", which locks the two shafts, while the lower register portrays the paladin Orlando's death in a cave. The other side shows the "casciadu fusu", which is the part in wrought iron and carved wood that joins the wheel axle to the bottom of the cart. Further down is a scene set in heaven, where Astolfo (paladin of Charlemagne, recognisable by the horn and blue-plumed helmet) receives the mind of Orlando from St. John the Evangelist. All the sides are further embellished by fruits indigenous to Sicily. Depicted on top the "tistera", or headboard, with the colourful feathered harness for the horse's head.

FAB28R-DG
PT06RD



smeg

DOLCE & GABBANA

Rotella e Castilletti

Cavalleria Rusticana



This refrigerator is decorated in the Vittoria style of cart painting, typical of the eponymous village in the province of Ragusa, on the south-east of the island, which is distinguished by spontaneous brushstrokes and dark tones with a predominance of brown. The side panels are characterized by a central field, within which is depicted a dancer framed by a garland of flowers, a decoration typically applied to the bed of the cart. The door portrays a scene from "Cavalleria Rusticana", an opera much beloved in Sicilian tradition. The decorative friezes into which it is inserted feature another motif of the Vittoria style: a geometric chain of lace adorned with rosettes and foliage. On the top is a scene of sailboats at sunset.

FAB28R-DG
CR01RD



smeg

DOLCE & GABBANA

Sapienza

Chivalric Duel between Rinaldo and Ruggiero



The decoration of this refrigerator is based on Sicilian cart painting, characterised by "cartocci" (colourful arabesques) and "catinelle" (the frames that surround them). The upper part of the front panel portrays a traditional Sicilian cart surrounded by prickly pears, below which, in the central register, is the famous battle between Rinaldo and Ruggiero by the walls of Arles. The two side panels host the profiles of two paladins inserted into a rigorously geometric and colourful background, which creates a wonderful "tile" effect. A horse in full regalia, painted within the traditional decoration of "cartocci" and "catinelle", adorns the top.

FAB28R-DG
SPO1RD



smeg

DOLCE & GABBANA

Sapienza

Chivalric Scenes



This refrigerator is a full celebration of the epic-chivalric spirit shared by Sicilian carts and the puppet theatre. The front panel represents three episodes of intrepid battle: in the upper register we see Guido di Santacroce and Leondoro routing the army of Roget of Constantinople; in the central cameo are Corradino and Bagail defeating the army of Zanclea; the bottom rondel portrays the bloody battle of Baiazette, led by Erminio della Stella d'Oro. The two side panels are characterised by a geometric play of triangles and diamonds, adorned by traditional "cartocci" (coloured arabesques) that frame the proud profiles of two paladins. The top is decorated with a stylised rosette, called "paparuni" in the dialect of the master cart painters.

FAB28R-DG
SPO2RD



smeg

DOLCE & GABBANA

Sapienza

Chivalric Duel between Bevis of Hampton and
Lucafero di Buldras



The decoration of this refrigerator refers explicitly to Sicilian cart painting: the upper part presents a symmetrical decoration featuring multicoloured arabesques ("cartocci"), which are in turn framed by the "catinella" motif, a recurring theme in Sicilian popular tradition. In the central sections of all three sides are the Paladins of France, armed and ready for battle, depicted in brilliant colours. Specifically, the front portrays the duel between Bevis of Hampton and Lucafero di Buldras. The top is painted in a brightly coloured "cartoccio" pattern.

FAB28R-DG
SPO3RD



smeg

DOLCE & GABBANA

Zambonelli e Nicosia

The Rape of the Sabine Women with Chivalric Scenes



The front of the refrigerator portrays the mysterious episode of the Rape of the Sabine Women: after the founding of Rome, the unmarried shepherds who were the first inhabitants of the city invited the neighboring Sabine tribe to the celebrations of the god Consus and then kidnapped the women. Thus began a long war from which Rome emerged victorious, which then led to the merger of the Sabines with the Romans. In the upper part is St. George, patron saint of knights and carters, intent on slaying the dragon. One side panel depicts the epic scene of the siege of Judica Castle. On the other side we find Guido di Santacroce and Leondoro battling the army of Roget at Constantinople: Guido is identified by the emblem of the cross, while Leondoro has a golden lion on his helmet. Painted on the top is the star rosette typical of Sicilian cart decoration.

FAB28R-DG
TZ02OR

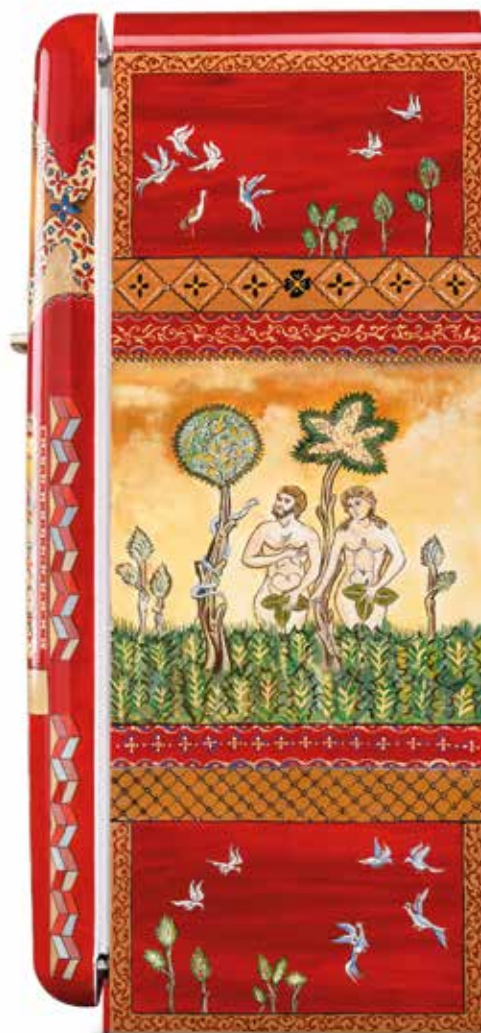
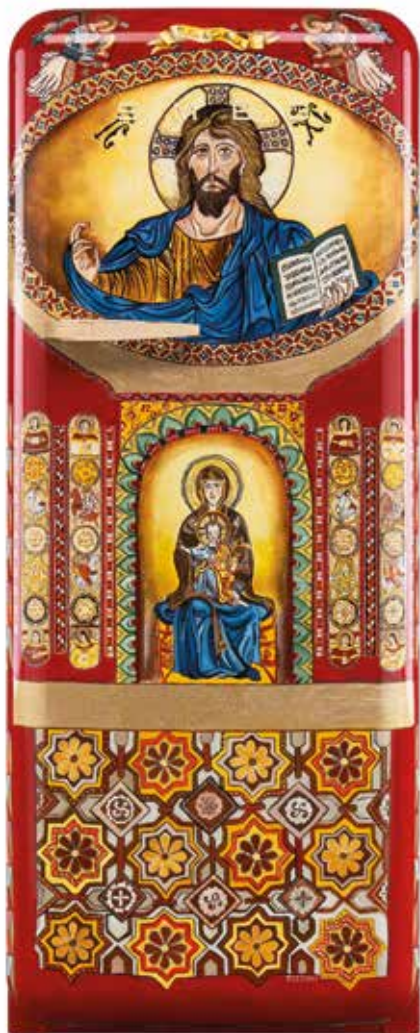


smeg

DOLCE & GABBANA

Zambonelli e Nicosia

Christ Pantocrator



Cart paintings also draw inspiration from the magnificent Byzantine mosaics in the ecclesiastical and private buildings of Sicily dating back to the Middle Ages. Christ Pantocrator, reproduced in the upper register of the door of this refrigerator, is inspired by the extraordinary apse mosaic in the Cathedral of Cefalù. A Madonna and Child Enthroned occupies the middle register, while the geometric patterns of the lower part are a tribute to the wooden ceilings carved by Arab artists in the Palatine Chapel in Palermo. Adam and Eve, modelled after the mosaic in the Cathedral of Monreale, are painted on one of the sides. The other side presents a baroque frieze with the figures of two dancers, a reinterpretation of the frescoes in the Pompeii Room of the Norman Palace in Palermo. The top depicts a Byzantine rose window from the colonnade of Monreale Cathedral, a fitting conclusion to this celebration of Sicilian architecture.

FAB28R-DG
TZ04RD

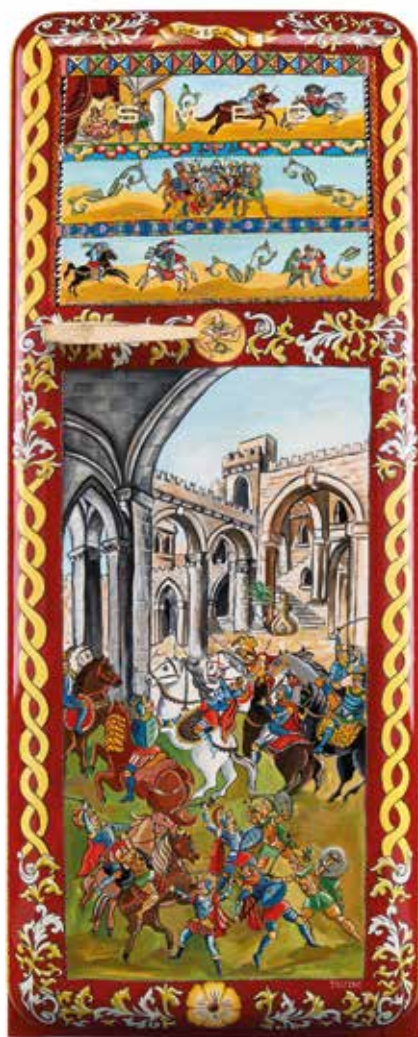


smeg

DOLCE & GABBANA

Zambonelli e Nicosia

Battle of Zanclea



The puppet theatre and the cart are two of the best-known traditions of Sicilian culture. The front of this refrigerator depicts in great detail a famous episode from the puppet theatre: against the backdrop of a majestic castle, Corradino and Bagail rout the army of Zanclea. The detail of the wheel of a Catanian cart is painted on one side in an explosion of colour, while Orlando's triumph over Ferrau is portrayed on the opposite side. The top is decorated with the head of horse caparisoned with feathers, colourful trimmings and "ciancianedde" (Sicilian bells).

**FAB28R-DG
TZ05BD**

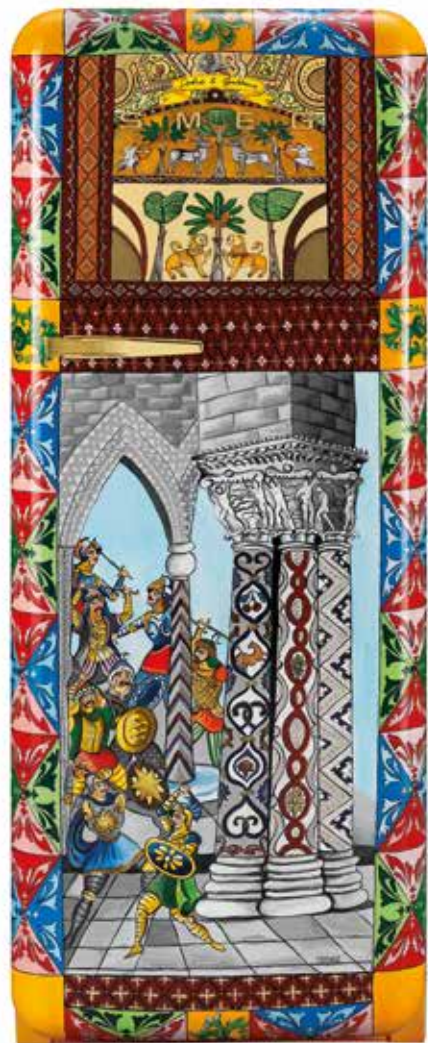


smeg

DOLCE & GABBANA

Zambonelli e Nicosia

The Cloister of Monreale



On the front side of this refrigerator is a depiction of a battle between the Saracens and Sicilians, the latter of whom defend the treasures conserved in the cloister of the Church of Monreale. One side panel portrays Ruggiero's rooms in Palermo's Norman Palace, also known as Palazzo Reale. On the opposite side we see the colonnade of the cloister, a continuation of the front scene, with rich and varied inlaid gold mosaics. On top is the Trinacria, symbol of Sicily and ancient name of the island, from the Greek "Trinakria", referring to its triangular form; the face of Medusa occupies the centre.

FAB28R-DG
TZ06YW

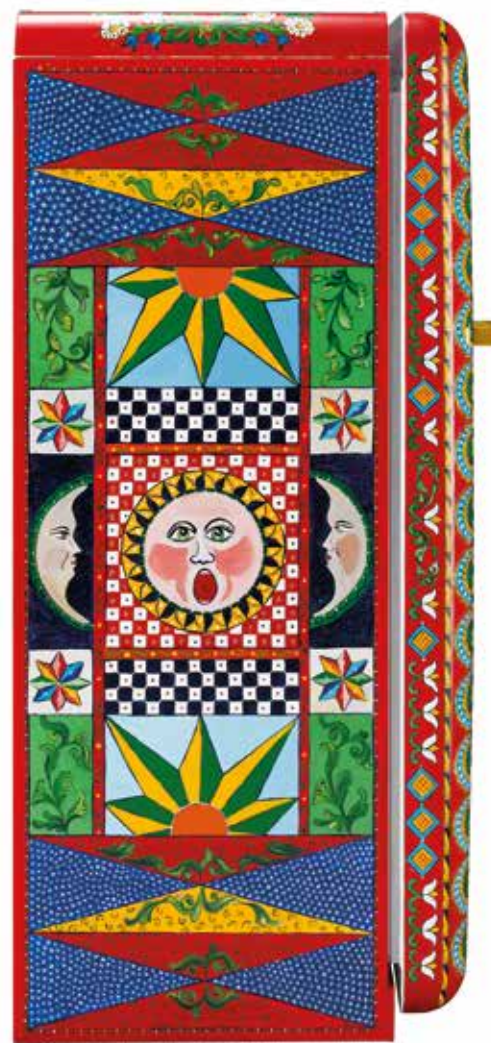
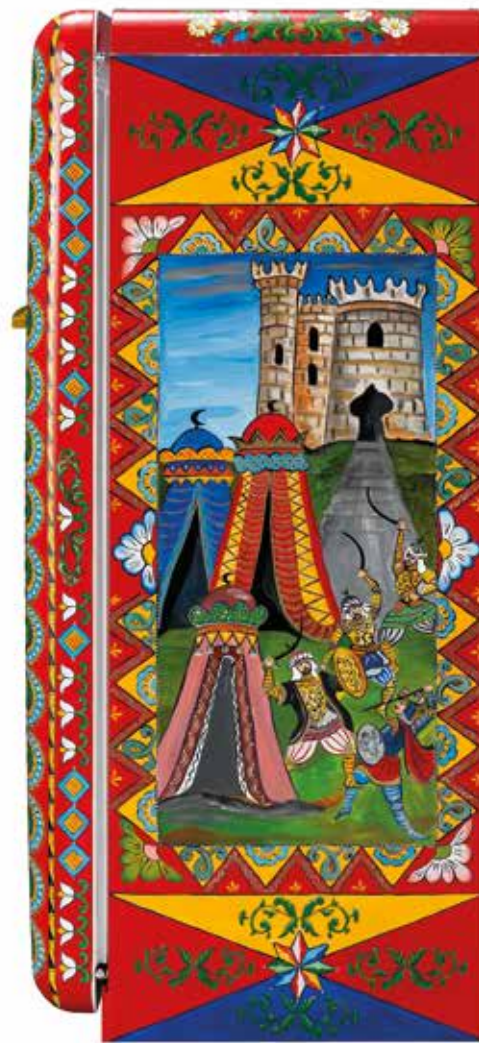


smeg

DOLCE & GABBANA

Zambonelli e Nicosia

The Battle of Roncesvalles



Represented on the front of this fridge is the battle of Roncesvalles, the best known and also the most fearfully anticipated moment for the audience of the puppet theatre: the defeat of Charlemagne's army by the Saracens. Looming over the scene is the Trinacria, from the Greek "treis" (three) and "akra" (promontories), the symbol of Sicily. The face pictured in the centre is that of Medusa, a figure from Greek mythology, who is said to still live in the grottoes of Acitrezza. One of the sides is painted with prevalently geometrical decorations, typical of carts of Palermo, graced by images of the sun, the moon and plant motifs. On the opposite side, against a background of an encampment, the Saracens lay siege to the castle. Among them are two recurring figures in the puppet theatre: Orontes of Morocco and the German general Sciandivaude, engaged in a fight to the death. On top of the refrigerator is the typical wheel of the Catanian cart, adorned with flowers, fruit and puppet heads.

FAB28R-DG
TZ07RD



smeg

DOLCE & GABBANA

Valenti

Epic Scenes of Orlando, Rodomonte and St. George,
with "Cartocci" and Masks



This refrigerator, inspired by the decorative motifs of the Sicilian cart typical of the eastern part of the island, is characterised by arabesque decorations known as "cartocci" and apotropaic masks, borrowed from the iconography of Mannerism. Painted in the bottom pane of the front panel is a duel at the foot of Mt. Etna between Orlando, paladin hero par excellence, and Rodomonte, king of Algiers and Sarza. The side panels are decorated with motifs that are usually applied to the inside of the Sicilian cart: rondels with geometric wheels and the faces of the two knights are set against a background "a visuli" (coloured tiles in a wedge pattern). On the top is St. George, patron saint of knights and carters, in the act of slaying the dragon.

FAB28R-DG
VN02RD



smeg

DOLCE & GABBANA

Valenti

The Legend of Colapesce



Painted on the front of this refrigerator is the legend of Colapesce, presented in episodes like on a storyteller's playbill. Nicola, nicknamed Colapesce for his ability to dive into the sea, not only recounts the wonders of the underwater world to all, but brings back extraordinary treasures. One day the young man does not return to the surface. Tradition has it that Colapesce is beneath Sicily, having replaced one of the three columns which, according to legend, support the island. Depicted on the side panels of the refrigerator are Scylla and Charybdis, the two mythological sea monsters who live at the bottom of the Strait of Messina.

**FAB28R-DG
VN03RD**



The artists

Antonio e Giuseppe Bevilacqua

Sebastiano Patania

Biagio Castillette

Damiano Rotella

Salvatore Sapienza

Tiziana Nicosia

Adriana Zambonelli

Alice Valenti

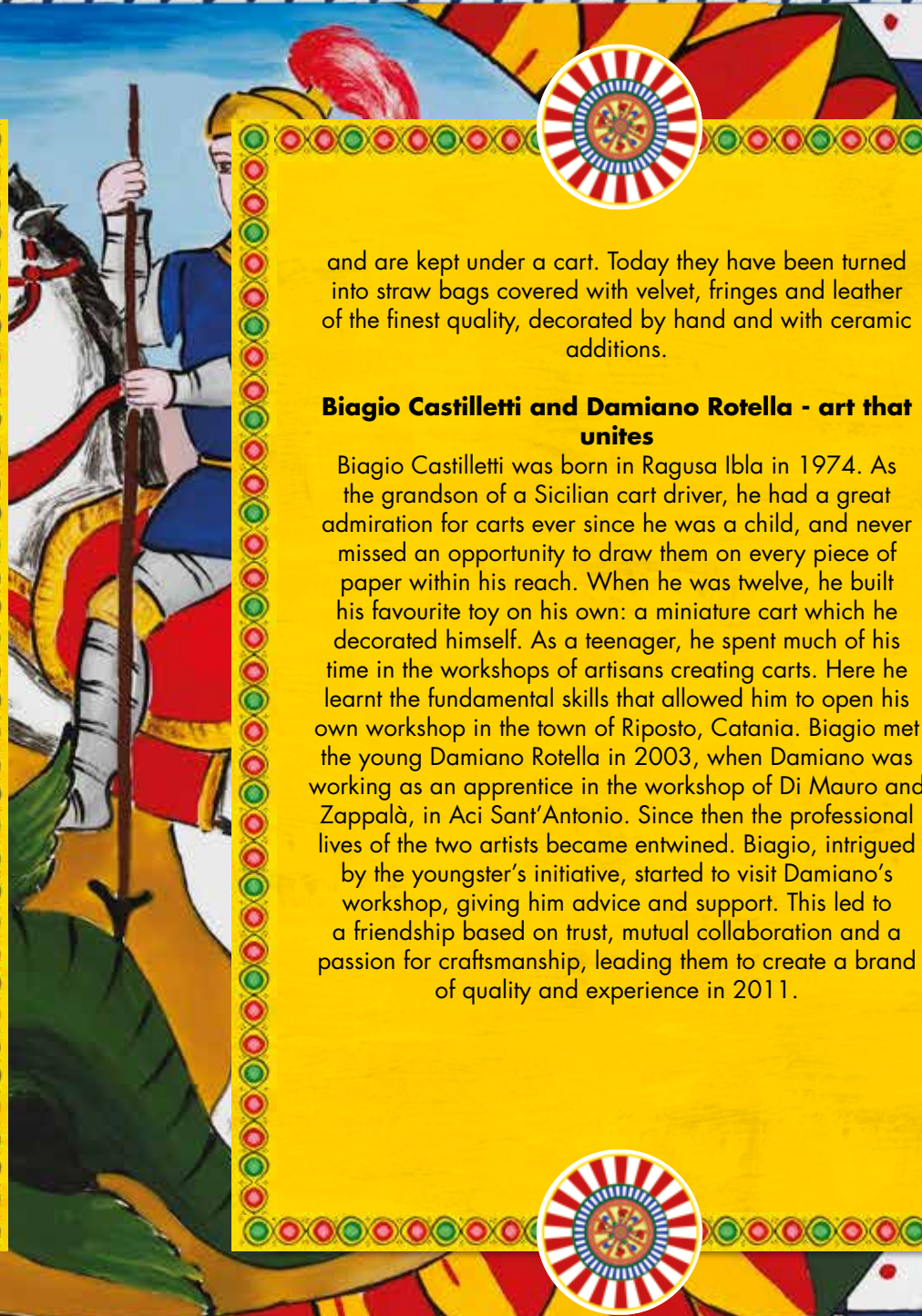


The Bevilacqua Brothers - Artistic ceramics

Ceramica Bevilacqua is a family-run artisan workshop based in inland Sicily, Caltanissetta. Since 1997, artists Antonio and Giuseppe, who are also brothers, have sought inspiration in Sicilian majolica and the island's traditional decorations. Yet, all their work is extremely recognisable and bears their personal touch. Amphorae, vases, plates and clocks are only some of the marvellous pieces produced. All the creations by the Bevilacqua brothers are dominated by bright yellow, intense blue, emerald green and deep black, representing the Sicilian sun, sea, hills and the lava on Mount Etna.

Sebastiano Patania - Tradition and craftsmanship

Since 1973 the Patania family have been making the traditional Sicilian Pupi, the famous puppet, in San Giovanni la Punta, Catania. Synonymous with professionalism, creativity and tradition, the Patanias have built an artisan business which has Sicilian tradition and unique charm at its core. These "treasures of the past" are refined, harmonious and unique objects. They are the result of a passion for the craft, a sense of belonging to their land and a meticulous love for quality materials. The age-old technique, which simply requires the hands of an expert craftsman, is an unchanging element in the creativity of the Patania family. In addition to the creation of the Pupi, a constant search for vintage items, and nurturing customer relationships, the Patania family also specialises in making the traditional "Coffe". These antique baskets hold food for the horses



and are kept under a cart. Today they have been turned into straw bags covered with velvet, fringes and leather of the finest quality, decorated by hand and with ceramic additions.

Biagio Castilletti and Damiano Rotella - art that unites

Biagio Castilletti was born in Ragusa Ibla in 1974. As the grandson of a Sicilian cart driver, he had a great admiration for carts ever since he was a child, and never missed an opportunity to draw them on every piece of paper within his reach. When he was twelve, he built his favourite toy on his own: a miniature cart which he decorated himself. As a teenager, he spent much of his time in the workshops of artisans creating carts. Here he learnt the fundamental skills that allowed him to open his own workshop in the town of Riposto, Catania. Biagio met the young Damiano Rotella in 2003, when Damiano was working as an apprentice in the workshop of Di Mauro and Zappalà, in Aci Sant'Antonio. Since then the professional lives of the two artists became entwined. Biagio, intrigued by the youngster's initiative, started to visit Damiano's workshop, giving him advice and support. This led to a friendship based on trust, mutual collaboration and a passion for craftsmanship, leading them to create a brand of quality and experience in 2011.



Salvatore Sapienza - It all started with a wheel

Salvatore Sapienza was born in Catania in 1980. His passion for the decorative arts started when he was only 13 years old. His story as a decorator of Sicilian carts began by chance, when he painted an old wheel. After restoring the wheel and painting it, his father showed it to two veteran decorators. It was the beginning of a long story about art, love and craftsmanship and luckily has never ended. Salvatore began working with the decorators, Domenico Di Mauro and Antonio Zappalà, in their workshop. Di Mauro was his master and his mentor, teaching him all the tricks of the trade. He quickly fell in love with cart art and soon it blossomed into his great passion. With sacrifice and great effort, Salvatore has made over 30 Sicilian carts. Today Salvatore works in a fruit shop he took over from his grandfather 12 years ago. Who knows what he will create if in the future he finds time to indulge in his greatest passion every day.

Adriana Zambonelli and Tiziana Nicosia - Mother and daughter, united by the same passion

Walking through the central streets of Catania, it is almost impossible not to be drawn into a fascinating artisan workshop. Welcome to the small and charming kingdom of Adriana and Tiziana, mother and daughter, brought together by an incredible passion for the land they were born and raised in. Born respectively in 1977 and 1950, both Sicilian and both from, Catania, they work together in a volcanic symbiosis, forming an explosive couple. They work hard and devotion for their craft and maintain their sense of humility at the same time. United by a healthy and entertaining sense of irony, their secret is their love for Sicily, for culture, tradition

and, naturally, for the art of the Pupi. The age-old culture of the carts, an important part of Sicilian "architecture", is a source of endless inspiration for them. Adriana made her first Sicilian Pupo in miniature more than thirty years ago.

It was her passion for art that led her to exhibit her works around the world. With art hard-wired into her, Tiziana was inspired by her mother and decided to create something new, a unique artisanal object, artistic transpositions of Sicily. They study the history of Sicilian art day after day and invent new ways of telling its story.

Alice Valenti - The story of a pupil and her teacher

Born in Catania in 1975, Alice still lives and works in the city. She graduated in Conservazione dei Beni Culturali di Pisa and then returned to Sicily where she trained in the Maestro Domenico di Mauro in Aci Sant'Antonio, the prestigious workshop of Sicilian carts. Many years before, the paths were laid for the master and the pupil to cross: for Alice the discovery of carts came from her interest in "objets d'art" and the "roots of her family". The two of them, together with a very small circle of artists, tell the story of a world that is now distant, but not yet lost. As the only woman amongst the very few painters of carts to inherit this age-old and complex decorative art, she studies in depth the multiple aspects of the popular artistic tradition. She draws inspiration from a personal interpretation of Sicilian folklore and its traditional themes. Alongside her production of painted furniture, paintings and everyday objects, she also works in interior design, fashion and theatre, all with a subterranean vein of irony and a touch of nostalgia.

